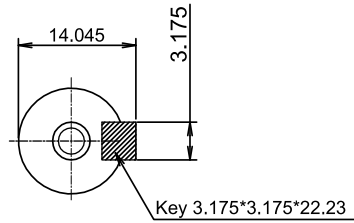
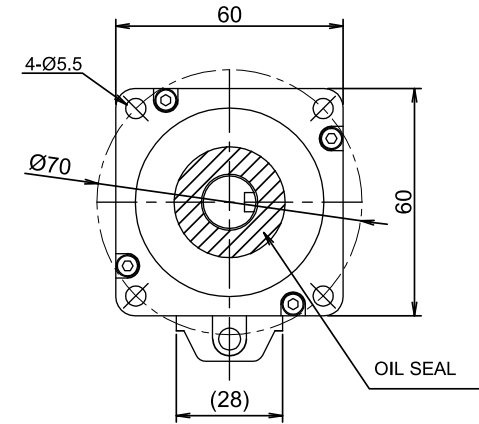
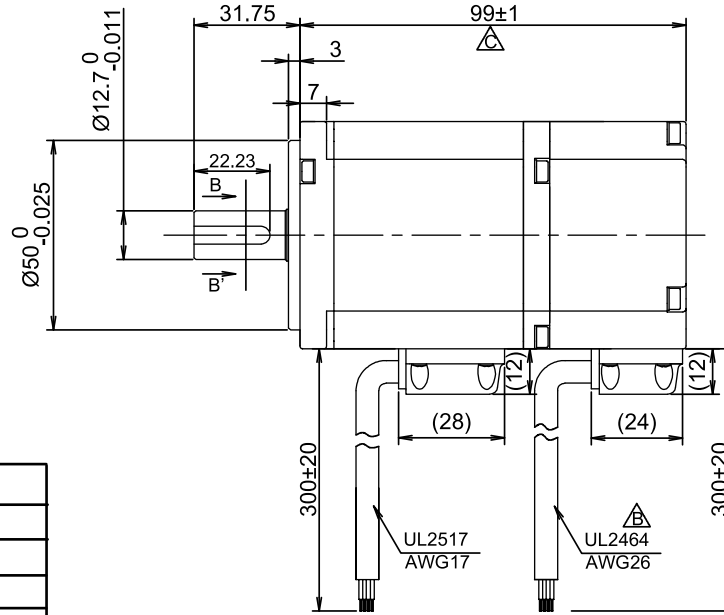


RoHS



B-B' VIEW



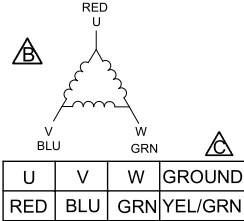
ENCODER SPECIFICATIONS

ENCODER TYPE	Incremental
POWER SUPPLY	5 Vdc
RESOLUTION	1000 ppr
OUTPUT TYPE	Line driver

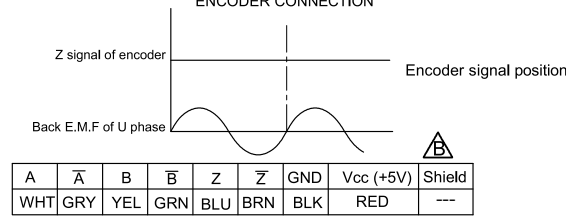
MOTOR SPECIFICATIONS

APPLIED VOLTAGE	48 Vdc
PHASES	3
POLES	8
RATED CURRENT	6.10 A
PEAK CURRENT	18.30 A
RATED POWER	200 W
RATED TORQUE	0.64 Nm
PEAK TORQUE	1.92 Nm
TORQUE COEFFICIENT	0.105 Nm/A
INSULATION CLASS	B

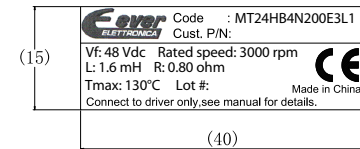
MOTOR CONNECTION



WIRING DIAGRAM



LABELS



RATED SPEED	3000 rpm ±10%
PEAK SPEED	5000 rpm ±10%
IP CODE	IP65 (except for the shaft extension)
LINE TO LINE RESISTANCE	0.80 ohm ±0.15
LINE TO LINE INDUCTANCE	1.60 mH ±20%
WEIGHT	1000 g.
BACK E.M.F.	---
ROTOR INERTIA	200 g.cm ²

UNIT: mm
UNLESS OTHERWISE SPECIFIED TOLERANCES
DIMENSIONS : ±0.3 mm DEGREES : ±5%

DESIGN	Stm01957-01c
CHECK	
APPROVED	
DATE	23 / 04 / 2021

REV

- 00a - First release.
- 01a - Modified the p/n.
- 01b - Modified the leadwires colours.
- 01c - Modified the motor length and leadwires colours.

MT24HB4N200E3L1
STEPPING MOTOR SPECIFICATION



www.everelettronica.it