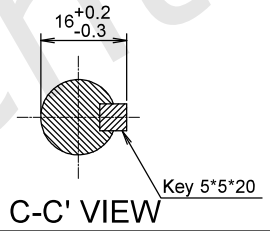
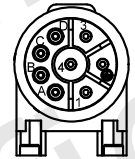
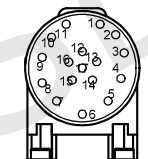
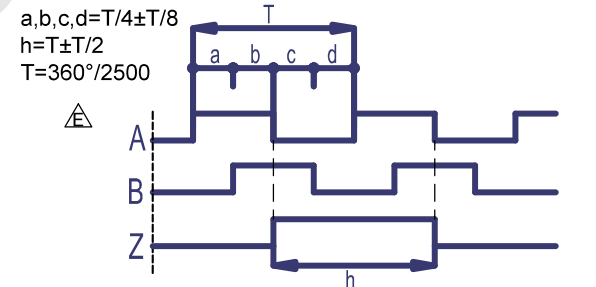
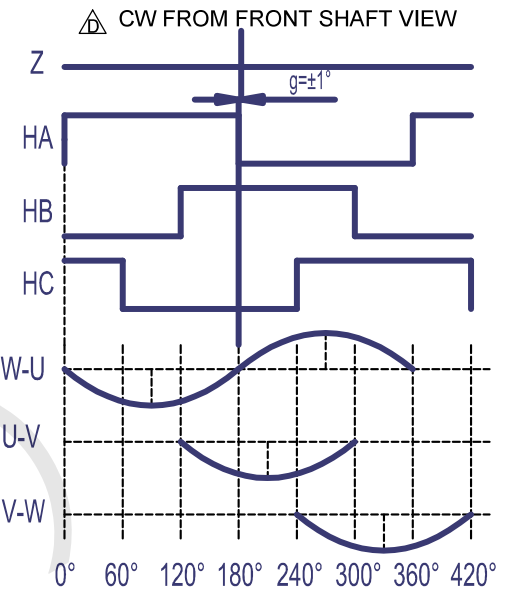
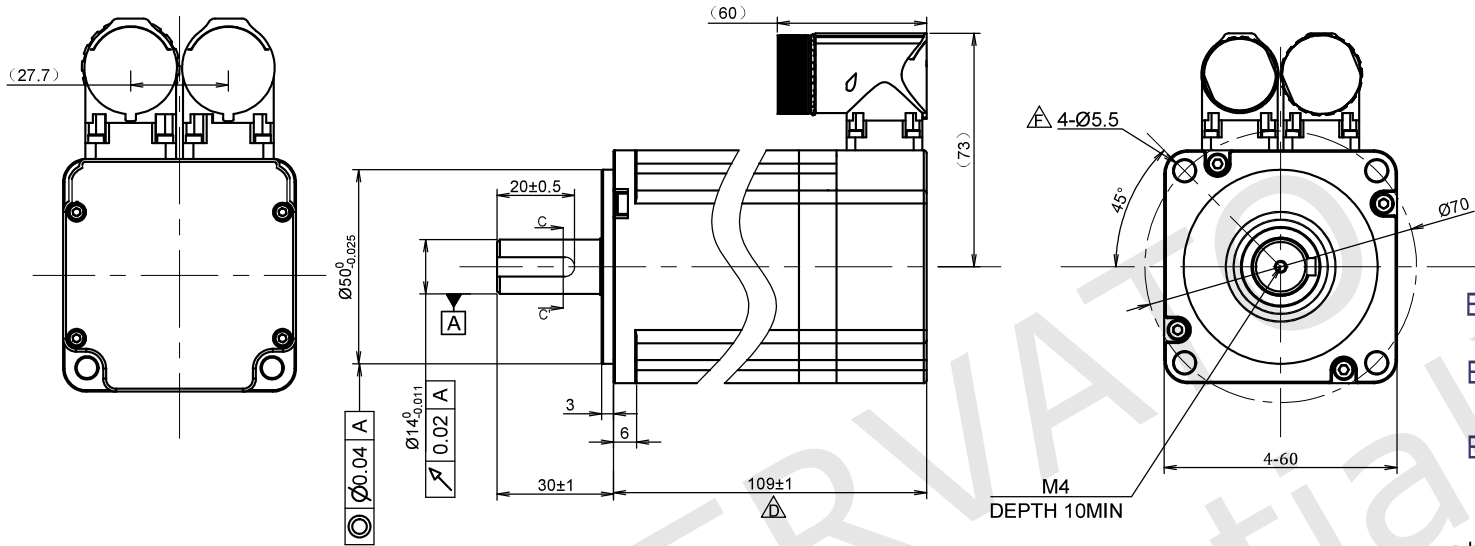


RoHS



ENCODER SPECIFICATIONS	
ENCODER TYPE	Incremental
POWER SUPPLY	5.00 Vdc
RESOLUTION	2500 ppr
OUTPUT TYPE	Line Driver
MOTOR SPECIFICATIONS	
POLES	10
RATED VOLTAGE	200~250 Vac
RATED POWER	400 W
RATED CURRENT	2.95 A
RATED TORQUE	1.28 Nm
PEAK TORQUE	4.00 Nm
RATED SPEED	3000 rpm ±10%
PEAK SPEED	6000 rpm ±10%
RESISTANCE	4.18 ohm ±10%
INDUCTANCE	8.03 mH ±20%
PEAK CURRENT	9.9 A
TORQUE CONSTANT	0.43 Nm/A
BACK EMF CONSTANT	30.1 Vrms/Krpm
ROTOR INERTIA	370 g.cm ²
WEIGHT	1600 g. approx
IP CODE	IP65 (except for the shafts extensions)

WIRING DIAGRAM

Motor power line:																	
PiN NO.	1	2	3	4	A	B	C	D									
Signal	U	Ground	V	W	---	---	---	---									
Motor signal line:																	
PiN NO.	1	2	3	4	5	6	7	8	9	10	11	12	13	14	15	16	17
Signal	+5 VDC	GND	A	A/	B	B/	Z	Z/	---	---	Hall HA+	Hall HA-	Hall HB+	Hall HB-	Hall HC+	Hall HC-	---

UNIT: mm
UNLESS OTHERWISE SPECIFIED TOLERANCES
DIMENSIONS : ±0.3 mm DEGREES : ±5%
ORTHOGRAPHIC PROJECTION

DRAWING NOT TO SCALE	DESIGN	Stm02746-00f
	CHECK	
	APPROVED	Matteo C. - 20 / 02 / 2024
	DATE	20 / 02 / 2024

LABELS

(15) Code : BA24HA0402E0B00
Cust. P/N:
Voltage: 230 Vac Power: 400W
Rated speed: 3000 rpm Lot #:
Rated torque: 1.28 Nm Made in China
Connect to driver only, see manual for details.

(40) YYYWXXXXX (25 x 8)
Stator barcode label

BA24HA0402E0B00
AC BRUSHLESS MOTOR SPECIFICATION

Ever
ELETRONICA
the clever drive
www.everelettronica.it

REV	00a - First release.
	00b - Correct the encoder resolution.
	00c - Correct the Hall signals.
	00d - Add diagrams and modified some parameters.
	00e - Updated the encoder waveform.
	00f - Correct the fixing holes on front flange.